

Spill Response Procedure

Spills can pose serious risks to our health, our safety, and our environment. A clear, structured response plan ensures quick action, minimises harm, and helps you stay compliant with regulations. Following these steps will protect people, prevent environmental damage, and reduce cleanup costs.

Step 1: Assess and Assist

- Make sure you are safe before helping others. Assist any injured persons and evacuate unnecessary personnel or the public from the area.
- Evaluate whether you can manage the spill with available resources. Report the incident to management and call for additional help including emergency services if needed.

Step 2: Protect Yourself

- If possible, identify the liquid spilled, using Material Safety Data Sheets, if available.
- Use the correct personal protective equipment (PPE).

Step 3: Contain the Spill

- Stop the source, if it's safe to do so.
- Block stormwater drains using drain protectors or sorbent pillows. Surround the spill with sorbent socks to prevent it spreading.

Step 4: Absorb and Dispose

- Using absorbents suitable for the liquid type, start from the outer edge and work toward the source using absorbent pads or loose absorbents.
- Place used absorbents and PPE in disposal bags or salvage drums.
- Decontaminate equipment and personnel. Arrange proper disposal through a licensed waste provider or contact your regional council for advice.

Step 5: Wrap Up

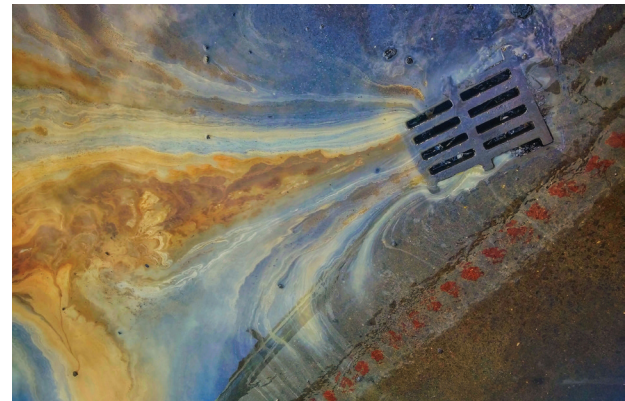
- Notify management that cleanup is complete.
- Record the incident and review the response. Share findings with your safety committee, if applicable.

Step 6: Restock Your Spill Kit

- Immediately replace any used items so your kit is "action ready" as soon as possible.

Need Extra Help?

If you have questions, need technical advice, or want to restock your spill kit, Hazero is here to help. Contact us at help@hazero.co.nz www.hazero.co.nz or call our support team on 0800 688 844 for expert guidance.

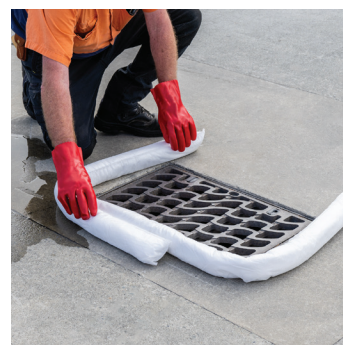


Correct use of your spill kit components

Following the correct procedure is a big part of using your spill kit effectively. It is equally important, that users know what each kit component is there to do. Let's break it down.

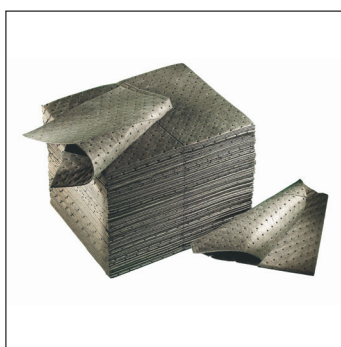
Absorbent Socks

These are placed on the perimeter of the spill, or around a stormwater drain, to prevent the spill from spreading further. Available in Oil Only, General Purpose and Chemical.



Absorbent Pads

Pads are designed to absorb and contain the spill, working back from the absorbent socks towards the source. Absorbent pads work rapidly and are particularly useful on flat, even surfaces. Available in Oil Only, General Purpose and Chemical.



Absorbent Pillows

Think of Pillows are larger versions of the pads. They are very effective when plugging drains or larger openings. Available in Oil Only, General Purpose and Chemical.



Loose Absorbents

Loose absorbents play a vital part on rough surfaces such as bitumen, asphalt or damaged concrete floors. They get into the undulations and draw out the liquid spilt in a way that pads can't.



Need Extra Help?

If you have questions, need technical advice, or want to restock your spill kit, Hazero is here to help. Contact us at help@hazero.co.nz, www.hazero.co.nz or call our support team on 0800 688 844 for expert guidance.