

Specification Sheet

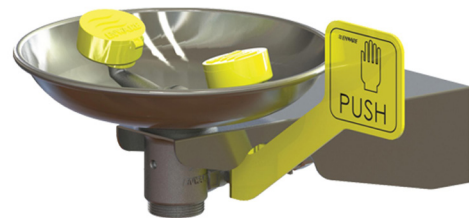
Emergency Wall Mounted Hand Operated Eye and Face Wash

Product Code: 18-1006

Product Features

Hand-activated with a single push, this effective, convenient, compact, wall mounted unit provides fast relief for workers in a personal contamination emergency, flushing contaminants from the eyes and face.

A must for companies and organisations using, storing, or transiting dangerous goods, the unit helps protect personnel from harm. Because every second counts when eyes, nose and mouth could be impacted, it's recommended that this unit be located within 10 seconds' walk of a potential hazard.



Replacement valve: 18-1014.

Assembly required.

Features

- Wall mounted
- Eye/face wash features Veritech™ Technology where dedicated eyewash and independently angled face wash streams deliver optimum coverage
- Zero velocity apex point provides more comfort and control for effective eye cleansing
- Easy to operate
- Complies with the requirements of ANSI Z358.1 and AS4775

Specifications

- Stainless steel bowl, and hand actuator
- Push activated eye/face wash with soft aerated flow and integral auto-open dust covers
- When activated, water will continuously flow through
- In integral flow volume control
- High visibility yellow powder coated push handle
- Weight: 5kgs
- Dimensions: 320 x 450 x 300mm (h,w,d)

Technical Information

| | |
|-----------------------------------|--|
| Inlet connection: | 1/2" BSP male (DN 15mm) with compression nut |
| Water supply line size: | Must be hydraulically sized to meet requirements |
| Minimum requirements: | 210 kPa (30 psi). Caution should be taken when pressure exceeds 550 kPa (80 psi) |
| Minimum flow requirements: | 11.4 lpm (3 US gpm) |
| Enware performance: | 26 lpm (6.9 US gpm) at working 210kPa (30 psi) |
| Waste water outlet size: | G 1-1/2" BSP |

Product Drawing

18-1006 | Emergency Wall Mounted Hand Operated Eye and Face Wash

